

## RESOLUTION NO. 2020-06

**A RESOLUTION BY THE BOARD OF COMMISSIONERS OF THE TOWN OF PERRYVILLE, ADOPTED PURSUANT TO THE AUTHORITY OF ARTICLE XI-E OF THE CONSTITUTION OF MARYLAND AND THE PROVISIONS OF THE LOCAL GOVERNMENT ARTICLE OF THE ANNOTATED CODE OF MARYLAND, TO ENLARGE THE CORPORATE BOUNDARIES OF THE TOWN OF PERRYVILLE BY ANNEXING LAND OWNED BY THE TOWN OF PERRYVILLE KNOWN AS THE "COMMUNITY PARK," AND CONSISTING OF 148.616 ACRES, MORE OR LESS, LOCATED ADJACENT TO THE VETERANS ADMINISTRATION HOSPITAL PROPERTY, SEVENTH ELECTION DISTRICT, CECIL COUNTY, MARYLAND, WHICH IS CONTIGUOUS TO AND ADJOINING THE BOUNDARIES OF THE EXISTING CORPORATE AREA OF THE TOWN OF PERRYVILLE.**

WHEREAS, the Town of Perryville is the sole owner of the real property described herein, which is contiguous to and adjoining the existing corporate boundaries of the Town of Perryville. The Board of Commissioners of the Town of Perryville desires to enlarge the corporate limits of the Town by annexing the property into the corporate limits of the Town of Perryville and, to that end, consented to the initiation of annexation proceedings by Resolution 2020-04 adopted on June 2, 2020; and

WHEREAS, the annexation of the property will not create any unincorporated area which is bounded on all sides by real property presently within the corporate limits of the Town of Perryville, or by real property proposed to be within the corporate limits of the Town of Perryville, or by any combination of such properties; and

WHEREAS, the Board of Commissioners of the Town of Perryville has determined that it may be in the best interests of the residents of the Town of Perryville to effect such an enlargement of its corporate boundaries; and

WHEREAS, no persons reside upon the property within the area to be annexed; and

WHEREAS, the Board of Commissioners of the Town of Perryville has determined to initiate a Resolution to enlarge and extend the boundaries of the Town of Perryville to include the hereinafter described real property and to make applicable to that area all laws, regulations, and taxes which are now in force and effect, or which may hereafter be enacted, in the Town of Perryville.

NOW THEREFORE BE IT RESOLVED BY THE BOARD OF COMMISSIONERS OF

THE TOWN OF PERRYVILLE, AS FOLLOWS:

SECTION 1. The corporate boundaries of the Town of Perryville are hereby enlarged by annexing thereto the property that is contiguous to and adjoining the present corporate boundaries as more particularly described by metes and bounds in a “DESCRIPTION OF 148.616 ACRES OF LAND, MORE OR LESS, FOR THE PURPOSE OF ANNEXATION OF TWO PARCELS. THE LANDS OF THE TOWN OF PERRYVILLE, MARYLAND, AND THE TOWN COMMISSIONERS OF PERRYVILLE, MARYLAND SEVENTH DISTRICT, CECIL COUNTY, MARYLAND.” dated May 26, 2020, and prepared by McCrone, and depicted on the survey plan entitled, “Annexation Plan to the Corporate Limits of the Town of Perryville” prepared by McCrone in May, 2019, attached hereto respectively as Exhibits A and B and incorporated by reference herein.

SECTION 2. The property within the area hereby annexed, consisting of 148.616 acres, more or less, owned by the Town of Perryville (hereinafter referred to as “the Property”), shall be classified as Open Space - OS Zoning District, as defined in the Town of Perryville Zoning Ordinance from the effective date of the annexation until such zoning is changed as provided by law, and the Town’s Comprehensive Zoning Maps shall be amended to reflect the annexation of such property and its zoning as provided by this Resolution.

SECTION 3. After the effective date of the amendment to the boundaries of the Town of Perryville provided for by this Resolution, the property annexed into the Town of Perryville by this Resolution, and all owners of such property and all persons residing within the areas annexed, shall be subject to the Charter, laws, ordinances and resolutions of the Town of Perryville.

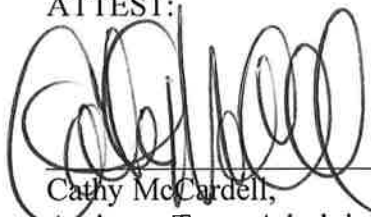
SECTION 4. Promptly after the introduction and first reading of this Resolution by the Board of Commissioners of the Town of Perryville, the Town Administrator shall cause to be published a public notice, briefly and accurately describing the proposed change and the conditions and circumstances applicable. The aforesaid notice shall be published four (4) times at not less than weekly intervals in a newspaper or newspapers of general circulation in the Town of Perryville and the area to be annexed. The aforesaid public notice shall state a time, not less than fifteen (15) days after the fourth (4<sup>th</sup>) publication thereof, and place within the Town of Perryville, at which a public hearing shall be held to consider public comment to consider this

Resolution. The public hearing may be continued or rescheduled in accordance with the requirements set forth in Local Government Article, Section 4-406(e), of the Annotated Code of Maryland. Immediately upon the first publication of the specified public notice, a copy of the public notice and other relevant documents shall be provided to the County Executive and County Council of Cecil County, the Maryland State Department of Planning, the Director of the Cecil County Department of Planning and Zoning, the Planning Commission of the Town of Perryville and to any other regional or state planning agency having jurisdiction over the property.

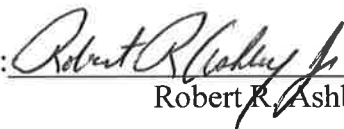
SECTION 5. This Resolution shall become effective forty-five (45) days after its enactment by the Mayor and Commissioners of the Town of Perryville, provided that a proper petition for referendum hereon is not filed as permitted by law.

SECTION 6. The Town Administrator shall properly register the original and new corporate boundaries of the Town of Perryville with the Clerk of the Circuit Court of Cecil County and the Department of Legislative Services for the State of Maryland when this Resolution takes effect.

ATTEST:

  
\_\_\_\_\_  
Cathy McCardell,  
Assistant Town Administrator

BOARD OF COMMISSIONERS OF THE  
TOWN OF PERRYVILLE

By:   
\_\_\_\_\_  
Robert R. Ashby, Jr., Mayor

Date Introduced: July 21, 2020  
Date Enacted: September 1, 2020  
Effective Date: October 16, 2020

# MCCRONE

ENGINEERS ■ SURVEYORS ■ PLANNERS

May 26, 2020  
D3180122

DESCRIPTION OF 148.616 ACRES OF LAND, MORE OR LESS,  
FOR THE PURPOSE OF ANNEXATION OF TWO PARCELS.  
THE LANDS OF THE TOWN OF PERRYVILLE, MARYLAND, AND  
THE TOWN COMMISSIONERS OF PERRYVILLE, MARYLAND  
SEVENTH DISTRICT, CECIL COUNTY, MARYLAND.

BEGINNING for the same at Concrete Monument Found at the intersection of the division line of the lands now or formerly the National Railroad Passenger Corporation, the lands now or formerly of the Veterans Administration hospital (see W. G. P. 1/122) and the herein described lands of the Town of Perryville (see N. D. S. 306/882) and the lands of the Town of Perryville (see W. A. S. 300/364); said beginning point further being the northwesternmost corner of the herein described lands of the Town of Perryville, Maryland as shown on a survey plan entitled "Annexation Plan to the Corporate Limits of The Town of Perryville" prepared by McCrone in May of 2019. The Northing and Easting coordinates for the beginning point as adjusted to the Maryland State Grid System are **N 689959.148 E 1,573733.567** (Note, all courses and distances that follow are now set in the Maryland State Grid System for Horizontal alignment);

THENCE, leaving said beginning point so fixed and leaving the Veterans Administration Hospital lands and binding on the southernmost outline of the National Railroad Passenger Corporation lands along the existing Town of Perryville Corporate Limits lines;

1. **North 68° 49' 17" East 2,164.39 feet** to a Concrete Monument Found on the southwesternmost outline of the lands now or formerly of The Commissioners of Perryville (see W. A. S. 116/136);

Thence, leaving the National Railroad Passenger Corporation lands and binding on the southwesternmost outline of the Commissioners of Perryville lands, the southwesternmost outline of other lands of the Commissioners of Perryville (see W. A. S. 344/810), the southwesternmost outline of still other lands of the Town of Perryville (see W. L. B. 1944/ 353 & P. C. 1015/876) and along the existing Corporate Limits Outline, the three following courses and distances:

2. **South 41° 07' 26" East 394.40 feet** to a Concrete Monument Found, thence

3. **South 41° 06' 05" East 475.31 feet** to a Post Found and thence

107 Chesapeake Blvd • Suite 104 • Elkton, MD • 21921  
410.398.1550 • elkton@mccrone-engineering.com  
www.mccrone-engineering.com

**Exhibit A**

4. **South 73° 37' 36" East 1,628.06 feet** to a point on the Approximate Mean High Water Line of Furnace Bay;

Thence, leaving the Town of Perryville lands and the existing Corporate Limits Outline and binding on the Approximate Mean High Water Line of Furnace Bay, the one hundred and twenty-six following courses and distances:

5. **South 74° 13' 35" West 57.25 feet** to a point, thence
6. **South 51° 46' 37" West 54.68 feet** to a point, thence
7. **South 58° 40' 50" West 40.55 feet** to a point, thence
8. **North 75° 14' 29" West 34.98 feet** to a point, thence
9. **South 57° 10' 47" West 108.60 feet** to a point, thence
10. **South 48° 03' 12" West 41.86 feet** to a point, thence
11. **South 32° 16' 30" East 5.55 feet** to a point, thence
12. **North 49° 54' 23" East 26.37 feet** to a point, thence
13. **North 78° 34' 24" East 40.01 feet** to a point, thence
14. **North 56° 32' 20" East 75.57 feet** to a point, thence
15. **South 50° 24' 58" East 8.53 feet** to a point, thence
16. **South 29° 14' 33" West 15.31 feet** to a point, thence
17. **South 22° 55' 57" East 23.85 feet** to a point, thence
18. **South 50° 12' 05" West 94.92 feet** to a point, thence
19. **North 88° 09' 15" West 17.54 feet** to a point, thence
20. **North 51° 42' 24" West 33.51 feet** to a point, thence
21. **North 87° 01' 56" West 83.82 feet** to a point, thence
22. **North 80° 12' 11" West 11.62 feet** to a point, thence
23. **South 63° 27' 25" West 38.25 feet** to a point, thence
24. **South 29° 32' 42" East 13.48 feet** to a point, thence
25. **North 73° 43' 15" East 19.15 feet** to a point, thence
26. **South 78° 55' 54" East 41.20 feet** to a point, thence
27. **South 42° 37' 17" East 23.80 feet** to a point, thence
28. **South 86° 00' 23" East 22.26 feet** to a point, thence
29. **South 34° 22' 48" East 12.52 feet** to a point, thence
30. **South 41° 40' 49" West 26.06 feet** to a point, thence
31. **South 26° 35' 13" East 2.99 feet** to a point, thence
32. **North 58° 39' 27" East 26.17 feet** to a point, thence
33. **North 74° 43' 06" East 69.62 feet** to a point, thence

- 
34. North 30° 07' 45" East 32.59 feet to a point, thence
  35. South 65° 48' 36" East 26.65 feet to a point, thence
  36. North 62° 16' 25" East 51.47 feet to a point, thence
  37. South 17° 16' 53" East 10.77 feet to a point, thence
  38. North 60° 43' 56" East 67.74 feet to a point, thence
  39. North 68° 02' 53" East 55.77 feet to a point, thence
  40. South 85° 52' 45" East 46.30 feet to a point, thence
  41. North 88° 25' 44" East 84.70 feet to a point, thence
  42. South 47° 15' 44" East 64.38 feet to a point, thence
  43. South 24° 28' 27" East 81.46 feet to a point, thence
  44. South 48° 53' 47" East 32.49 feet to a point, thence
  45. North 77° 54' 59" East 19.82 feet to a point, thence
  46. South 18° 03' 01" East 6.26 feet to a point, thence
  47. South 43° 31' 53" West 20.73 feet to a point, thence
  48. South 44° 45' 57" East 21.43 feet to a point, thence
  49. South 48° 34' 07" West 30.10 feet to a point, thence
  50. North 50° 44' 05" West 55.85 feet to a point, thence
  51. North 47° 27' 59" West 48.29 feet to a point, thence
  52. North 27° 53' 25" West 45.36 feet to a point, thence
  53. North 50° 31' 09" West 51.13 feet to a point, thence
  54. North 81° 25' 51" West 60.40 feet to a point, thence
  55. South 70° 24' 37" West 68.49 feet to a point, thence
  56. South 63° 37' 14" West 26.33 feet to a point, thence
  57. South 23° 09' 05" West 15.50 feet to a point, thence
  58. South 76° 39' 19" West 31.16 feet to a point, thence
  59. South 00° 21' 14" West 22.41 feet to a point, thence
  60. North 71° 29' 08" West 26.14 feet to a point, thence
  61. South 56° 12' 14" West 39.21 feet to a point, thence
  62. South 51° 28' 48" West 76.63 feet to a point, thence
  63. South 35° 25' 14" East 6.45 feet to a point, thence
  64. North 56° 00' 41" East 60.49 feet to a point, thence
  65. North 70° 40' 35" East 44.31 feet to a point, thence
  66. North 60° 46' 12" East 41.12 feet to a point, thence
  67. North 51° 09' 04" East 47.59 feet to a point, thence

34. North 30° 07' 45" East 32.59 feet to a point, thence
35. South 65° 48' 36" East 26.65 feet to a point, thence
36. North 62° 16' 25" East 51.47 feet to a point, thence
37. South 17° 16' 53" East 10.77 feet to a point, thence
38. North 60° 43' 56" East 67.74 feet to a point, thence
39. North 68° 02' 53" East 55.77 feet to a point, thence
40. South 85° 52' 45" East 46.30 feet to a point, thence
41. North 88° 25' 44" East 84.70 feet to a point, thence
42. South 47° 15' 44" East 64.38 feet to a point, thence
43. South 24° 28' 27" East 81.46 feet to a point, thence
44. South 48° 53' 47" East 32.49 feet to a point, thence
45. North 77° 54' 59" East 19.82 feet to a point, thence
46. South 18° 03' 01" East 6.26 feet to a point, thence
47. South 43° 31' 53" West 20.73 feet to a point, thence
48. South 44° 45' 57" East 21.43 feet to a point, thence
49. South 48° 34' 07" West 30.10 feet to a point, thence
50. North 50° 44' 05" West 55.85 feet to a point, thence
51. North 47° 27' 59" West 48.29 feet to a point, thence
52. North 27° 53' 25" West 45.36 feet to a point, thence
53. North 50° 31' 09" West 51.13 feet to a point, thence
54. North 81° 25' 51" West 60.40 feet to a point, thence
55. South 70° 24' 37" West 68.49 feet to a point, thence
56. South 63° 37' 14" West 26.33 feet to a point, thence
57. South 23° 09' 05" West 15.50 feet to a point, thence
58. South 76° 39' 19" West 31.16 feet to a point, thence
59. South 00° 21' 14" West 22.41 feet to a point, thence
60. North 71° 29' 08" West 26.14 feet to a point, thence
61. South 56° 12' 14" West 39.21 feet to a point, thence
62. South 51° 28' 48" West 76.63 feet to a point, thence
63. South 35° 25' 14" East 6.45 feet to a point, thence
64. North 56° 00' 41" East 60.49 feet to a point, thence
65. North 70° 40' 35" East 44.31 feet to a point, thence
66. North 60° 46' 12" East 41.12 feet to a point, thence
67. North 51° 09' 04" East 47.59 feet to a point, thence

68. **North 76° 31' 40" East 17.40 feet** to a point, thence
69. **South 05° 24' 32" West 12.83 feet** to a point, thence
70. **North 61° 13' 44" East 36.08 feet** to a point, thence
71. **North 39° 12' 02" West 9.02 feet** to a point, thence
72. **North 67° 52' 34" East 30.45 feet** to a point, thence
73. **North 84° 41' 00" East 32.21 feet** to a point, thence
74. **South 65° 51' 36" East 24.61 feet** to a point, thence
75. **South 40° 37' 32" East 37.97 feet** to a point, thence
76. **South 36° 05' 44" West 13.66 feet** to a point, thence
77. **South 30° 51' 56" East 44.28 feet** to a point, thence
78. **South 79° 54' 16" West 8.73 feet** to a point, thence
79. **North 60° 49' 33" West 49.71 feet** to a point, thence
80. **South 68° 07' 46" West 10.27 feet** to a point, thence
81. **South 21° 06' 08" West 7.56 feet** to a point, thence
82. **South 80° 44' 10" East 12.68 feet** to a point, thence
83. **South 25° 00' 45" West 9.62 feet** to a point, thence
84. **North 86° 15' 33" West 52.90 feet** to a point, thence
85. **South 16° 15' 04" West 19.97 feet** to a point, thence
86. **North 89° 39' 27" East 48.50 feet** to a point, thence
87. **South 52° 55' 18" East 41.84 feet** to a point, thence
88. **South 52° 55' 18" East 81.97 feet** to a point, thence
89. **South 66° 26' 28" East 65.69 feet** to a point, thence
90. **South 70° 51' 36" East 61.70 feet** to a point, thence
91. **South 43° 41' 30" East 73.24 feet** to a point, thence
92. **South 47° 47' 02" East 26.00 feet** to a point, thence
93. **South 72° 04' 11" East 26.49 feet** to a point, thence
94. **South 86° 36' 44" East 125.36 feet** to a point, thence
95. **South 65° 04' 44" East 55.81 feet** to a point, thence
96. **South 54° 32' 44" East 68.94 feet** to a point, thence
97. **South 53° 24' 57" East 94.23 feet** to a point, thence
98. **South 43° 39' 08" East 73.84 feet** to a point, thence
99. **South 66° 33' 01" East 112.63 feet** to a point, thence
100. **South 00° 10' 52" East 68.64 feet** to a point, thence
101. **South 02° 02' 56" West 43.94 feet** to a point, thence



102. **South 41° 40' 03" East 45.57 feet** to a point, thence
103. **South 53° 50' 50" East 37.16 feet** to a point, thence
104. **South 51° 29' 21" East 45.77 feet** to a point, thence
105. **South 27° 38' 27" East 47.43 feet** to a point, thence
106. **South 67° 56' 26" East 67.01 feet** to a point, thence
107. **South 59° 27' 38" East 99.83 feet** to a point, thence
108. **South 47° 11' 53" East 55.08 feet** to a point, thence
109. **South 34° 26' 40" East 85.22 feet** to a point, thence
110. **South 40° 39' 52" East 133.76 feet** to a point, thence
111. **South 46° 27' 34" East 106.24 feet** to a point, thence
112. **South 17° 54' 02" East 45.60 feet** to a point, thence
113. **South 39° 07' 26" East 37.61 feet** to a point, thence
114. **South 34° 08' 46" East 57.72 feet** to a point, thence
115. **South 01° 44' 00" East 54.35 feet** to a point, thence
116. **South 31° 57' 32" East 86.81 feet** to a point, thence
117. **South 61° 27' 13" East 100.18 feet** to a point, thence
118. **South 28° 37' 43" East 35.33 feet** to a point, thence
119. **South 17° 30' 53" West 94.04 feet** to a point, thence
120. **South 04° 14' 05" West 79.98 feet** to a point, thence
121. **South 02° 51' 00" East 44.93 feet** to a point, thence
122. **South 82° 46' 22" East 6.40 feet** to a point, thence
123. **South 09° 01' 19" West 14.35 feet** to a point, thence
124. **North 84° 19' 57" West 10.56 feet** to a point, thence
125. **South 29° 36' 10" West 69.60 feet** to a point, thence
126. **South 51° 22' 14" West 56.51 feet** to a point, thence
127. **South 06° 55' 31" West 91.86 feet** to a point, thence
128. **South 04° 12' 33" East 35.98 feet** to a point, thence
129. **South 25° 13' 20" East 29.17 feet** to a point and thence
130. **South 14° 15' 30" East 39.40 feet** to a point on the westernmost outline of other lands of the Town of Perryville (see W. A. S. 300/364),

Thence, continuing on the Approximate Mean High Water Line of Furnace Bay, the Susquehanna River and on the outlines of the other lands of the Town of Perryville (see W. A. S. 300/364) the seventy-five following courses and distances:

131. **South 14° 15' 30" East 12.31 feet** to a point, thence

- 
132. South 47° 14' 31" East 39.78 feet to a point, thence
  133. South 73° 50' 19" East 42.38 feet to a point, thence
  134. North 86° 13' 36" East 46.52 feet to a point, thence
  135. South 73° 53' 13" East 26.84 feet to a point, thence
  136. South 84° 42' 29" East 47.12 feet to a point, thence
  137. South 70° 14' 29" East 29.38 feet to a point, thence
  138. South 48° 54' 54" East 22.67 feet to a point, thence
  139. South 00° 20' 55" East 51.38 feet to a point, thence
  140. South 05° 37' 31" East 99.84 feet to a point, thence
  141. South 27° 52' 28" East 37.76 feet to a point, thence
  142. South 33° 55' 44" East 57.52 feet to a point, thence
  143. South 24° 43' 45" East 28.67 feet to a point, thence
  144. South 16° 22' 33" East 43.90 feet to a point, thence
  145. South 42° 02' 10" East 40.15 feet to a point, thence
  146. South 51° 09' 32" East 59.07 feet to a point, thence
  147. South 67° 54' 02" East 69.33 feet to a point, thence
  148. South 79° 07' 29" East 71.08 feet to a point, thence
  149. South 79° 56' 45" East 60.06 feet to a point, thence
  150. South 59° 51' 12" East 35.00 feet to a point, thence
  151. South 37° 47' 03" East 42.93 feet to a point, thence
  152. South 21° 44' 45" East 69.21 feet to a point, thence
  153. South 24° 41' 43" East 93.36 feet to a point, thence
  154. South 31° 27' 46" East 58.66 feet to a point, thence
  155. South 36° 21' 45" East 59.63 feet to a point, thence
  156. South 53° 03' 02" East 83.06 feet to a point, thence
  157. South 67° 31' 11" East 97.42 feet to a point, thence
  158. South 84° 26' 53" East 35.13 feet to a point, thence
  159. North 65° 30' 03" East 23.68 feet to a point, thence
  160. South 79° 02' 15" East 90.59 feet to a point, thence
  161. South 71° 37' 45" East 71.89 feet to a point, thence
  162. South 64° 14' 06" East 73.52 feet to a point, thence
  163. South 73° 02' 57" East 58.29 feet to a point, thence
  164. South 87° 09' 45" East 34.75 feet to a point, thence
  165. North 87° 09' 38" East 42.42 feet to a point, thence

166. North 70° 26' 12" East 47.52 feet to a point, thence
167. North 68° 30' 48" East 114.12 feet to a point, thence
168. North 80° 45' 45" East 39.27 feet to a point, thence
169. South 79° 31' 06" East 24.75 feet to a point, thence
170. South 62° 19' 02" East 61.65 feet to a point, thence
171. South 42° 24' 49" East 31.36 feet to a point, thence
172. South 57° 45' 18" East 67.80 feet to a point, thence
173. North 75° 34' 38" East 31.21 feet to a point, thence
174. South 43° 07' 21" East 102.52 feet to a point, thence
175. South 58° 48' 21" East 80.81 feet to a point, thence
176. South 31° 56' 16" East 26.66 feet to a point, thence
177. South 00° 44' 53" East 68.77 feet to a point, thence
178. South 03° 53' 58" East 70.34 feet to a point, thence
179. South 11° 29' 46" West 76.58 feet to a point, thence
180. South 25° 51' 25" West 71.53 feet to a point, thence
181. South 59° 07' 57" West 40.79 feet to a point, thence
182. South 84° 57' 44" West 71.50 feet to a point, thence
183. North 78° 33' 59" West 82.30 feet to a point, thence
184. North 81° 09' 59" West 81.26 feet to a point, thence
185. South 80° 23' 40" West 55.19 feet to a point, thence
186. South 59° 56' 29" West 56.35 feet to a point, thence
187. South 63° 00' 55" West 89.23 feet to a point, thence
188. South 80° 26' 56" West 85.94 feet to a point, thence
189. South 84° 45' 35" West 91.08 feet to a point, thence
190. South 80° 49' 59" West 120.06 feet to a point, thence
191. South 62° 38' 40" West 31.54 feet to a point, thence
192. North 89° 25' 19" West 87.96 feet to a point, thence
193. North 81° 28' 47" West 118.12 feet to a point, thence
194. North 79° 38' 56" West 108.67 feet to a point, thence
195. South 86° 25' 40" West 75.18 feet to a point, thence
196. North 73° 18' 57" West 139.12 feet to a point, thence
197. North 67° 49' 47" West 109.22 feet to a point, thence
198. North 79° 32' 51" West 106.00 feet to a point, thence
199. North 76° 16' 46" West 96.12 feet to a point, thence

- 200. **North 79° 33' 22" West 163.21 feet** to a point, thence
- 201. **North 86° 26' 53" West 128.86 feet** to a point, thence
- 202. **South 88° 18' 50" West 180.77 feet** to a point, thence
- 203. **North 67° 01' 21" West 34.51 feet** to a point, thence
- 204. **South 51° 42' 49" West 57.75 feet** to a point and thence
- 205. **North 89° 49' 59" West 186.91 feet** to a point on the aforementioned easternmost outline of the lands of the United States Of America, Veterans Administration Hospital (sec W. G. P 1/122),

Thence, leaving the Approximate Mean High Water Line of the Susquehanna River and binding on the easternmost outlines of the United States of America lands, the two following courses and distances:

- 206. **North 19° 40' 52" East 80.72 feet** to a Concrete Monument Found and thence;
- 207. **North 19° 40' 52" East 1,258.89 feet** to a point on the easternmost outline of the lands of The Commissioners of Perryville (see N. D. S. 306/882);

Thence, continuing on the division line between the United States Of America, Veterans Administration Hospital (see W. G. P 1/122) lands and the lands of The Commissioners of Perryville (see N. D. S. 306/882). The twelve following courses and distances:

- 208. **North 71° 21' 03" West 63.99 feet** to a Concrete Monument Found at a point of curvature, thence
- 209. **By the arc of a curve to the right 394.79 feet** to a point; said curve having a **radius of 170.00 feet** and scribed by a chord of **North 05° 16' 11" West 311.87 feet**, thence
- 210. **North 61° 10' 55" East 114.05 feet** to a Concrete Monument Found, thence
- 211. **North 06° 09' 47" East 186.08 feet** to a Concrete Monument Found, thence
- 212. **North 45° 59' 43" West 194.37 feet** to a Concrete Monument Found, thence
- 213. **North 36° 09' 27" West 377.92 feet** to a Concrete Monument Found, thence
- 214. **South 62° 17' 30" West 494.18 feet** to a Concrete Monument Found, thence
- 215. **North 82° 58' 25" West 1,148.04 feet** to a Concrete Monument Found, thence
- 216. **North 65° 48' 23" West 537.10 feet** to a Concrete Monument Found, thence
- 217. **North 36° 00' 07" West 544.00 feet** to a Concrete Monument Found, thence
- 218. **North 44° 58' 28" West 1,004.09 feet** to a point and thence
- 219. **North 81° 53' 57" West 2,161.39 feet** to the Place of Beginning..

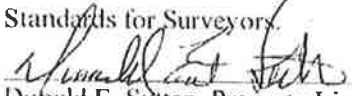
CONTAINING in all 148.616 Acres of land, more or less, as described by McCrone, in May of 2020.

BEING, or intending to be all those lands conveyed to the Town of Perryville, Maryland from the United States Of America by Quitclaim Deed dated May 7, 1990 and recorded among the Land Records of Cecil County, Maryland in Liber N. D. S. 306, Folio 882 and

BEING, or intending to be all those lands conveyed to the Town of Perryville, Maryland from the United States Of America by Quitclaim Deed dated November 20, 1972 and recorded among the Land Records of Cecil County, Maryland in Liber W. A. S. 300, Folio 364.

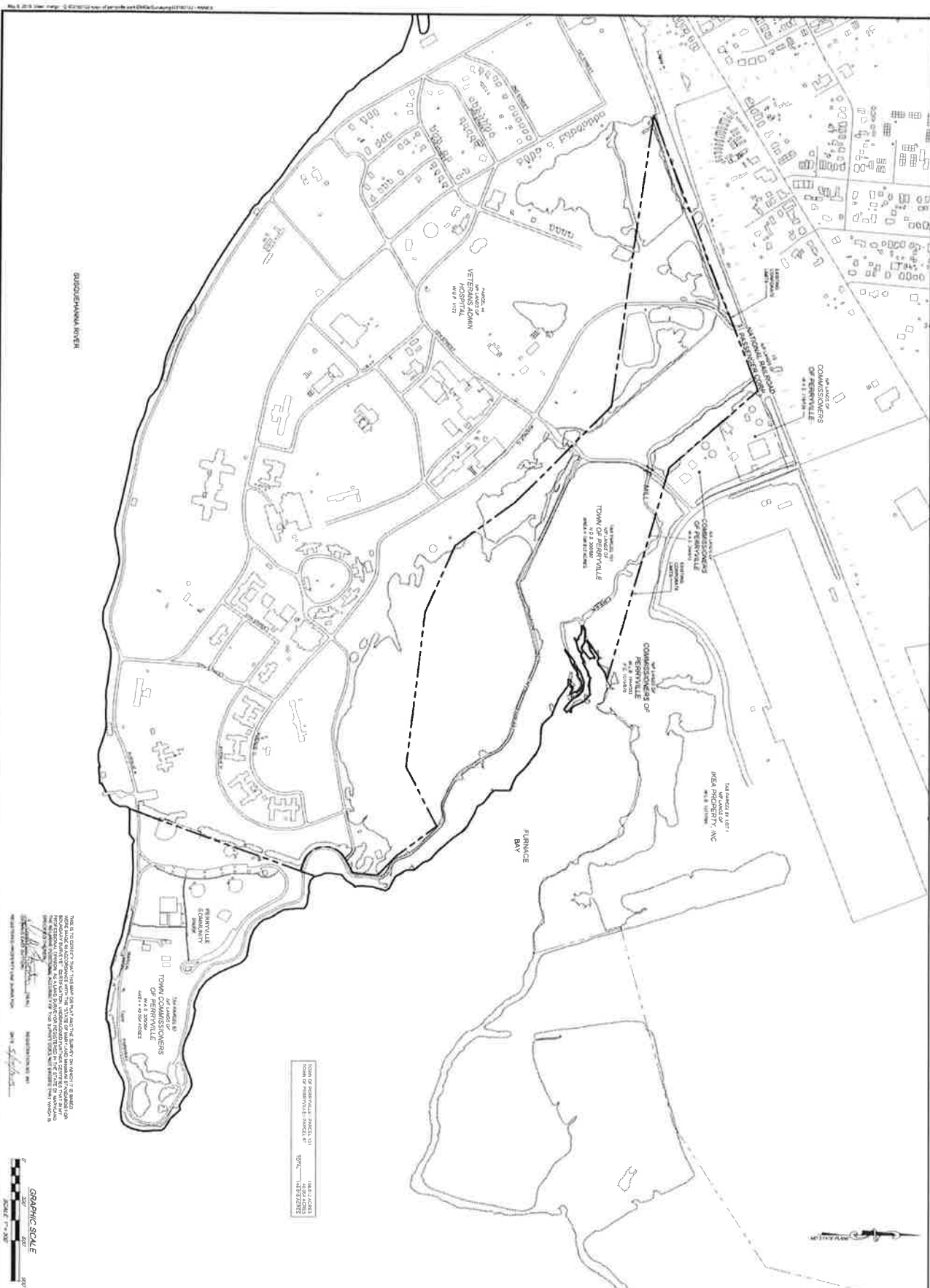
THIS description prepared without the benefit of a title search.

THE legal description contained herein was prepared by McCrone, at which time I, the undersigned registered surveyor was in responsible charge and to the best of my professional knowledge, information and belief its preparation and the surveying work reflected therein is in compliance with the requirements stated in Regulation 09.13.06.12 of the Maryland Minimum Standards for Surveyors.

  
Donald E. Sutton, Property Line Surveyor #481  
My License Expires on 01/12/2021

5/26/2020  
Date





BOUNDARY REVIEW

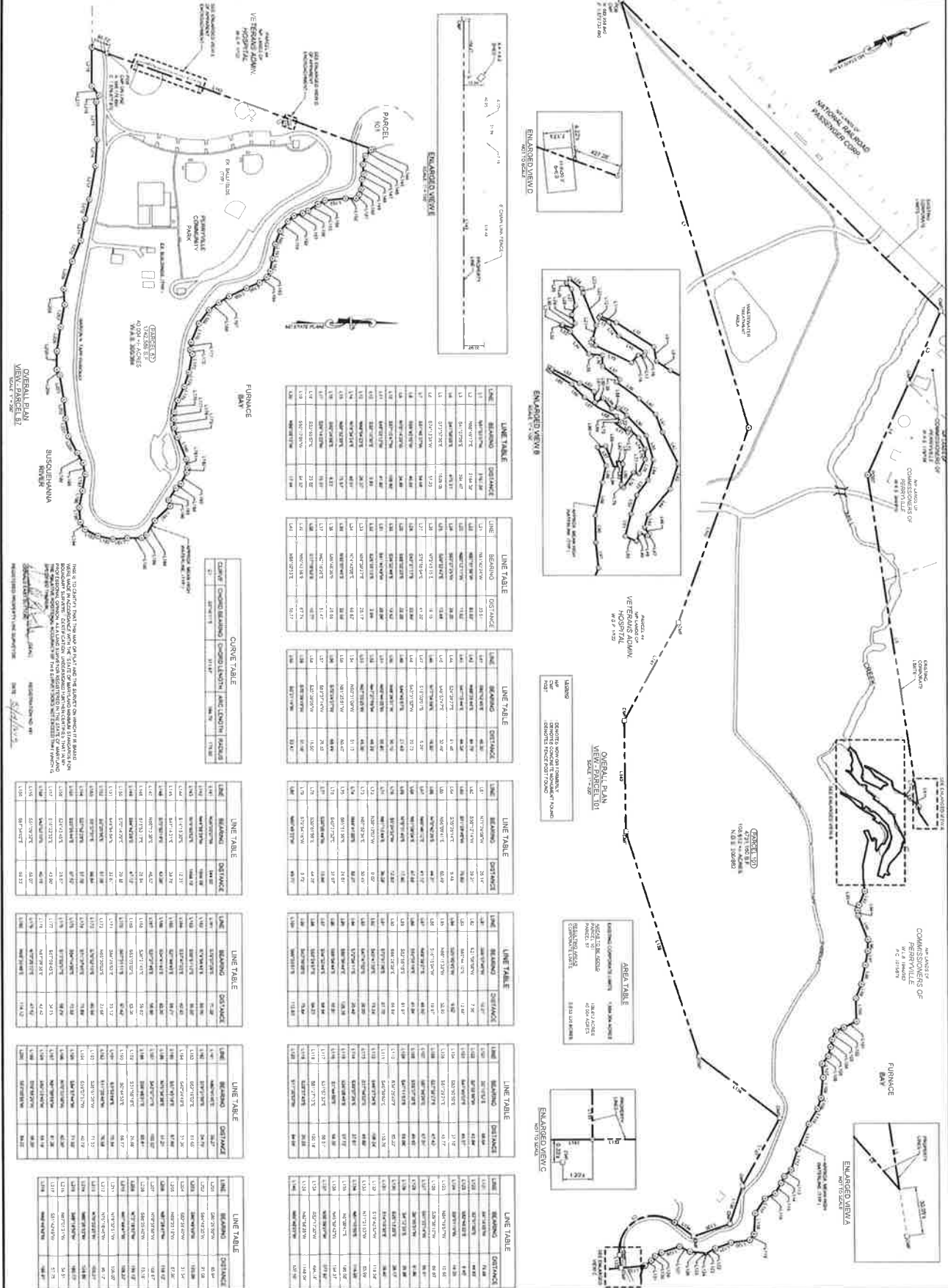
THIS IS TO CERTIFY THAT THIS MAP OR PLAN AND THE SURVEY OR SURVEYS THEREON ARE IN ACCORDANCE WITH THE PROVISIONS OF THE REAL PROPERTY AND CONVEYANCE ACT OF 1938 AND THE REAL PROPERTY AND CONVEYANCE ACT OF 1950 AND THE REAL PROPERTY AND CONVEYANCE ACT OF 1958 AND THE REAL PROPERTY AND CONVEYANCE ACT OF 1966 AND THE REAL PROPERTY AND CONVEYANCE ACT OF 1974 AND THE REAL PROPERTY AND CONVEYANCE ACT OF 1982 AND THE REAL PROPERTY AND CONVEYANCE ACT OF 1990 AND THE REAL PROPERTY AND CONVEYANCE ACT OF 1998 AND THE REAL PROPERTY AND CONVEYANCE ACT OF 2006 AND THE REAL PROPERTY AND CONVEYANCE ACT OF 2014 AND THE REAL PROPERTY AND CONVEYANCE ACT OF 2022.



TOWN OF PERRYVILLE, INCORPORATED 1954  
 100% TAXPAYERS

Exhibit B

SHEET NO. <b>CONCEPT</b> 1 OF 2	<b>ANNEXATION PLAN</b> CORPORATE LIMITS <b>TOWN OF PERRYVILLE</b> SEVENTH ELECTION DISTRICT, CECIL COUNTY, MARYLAND	DATE: MAY 2018 JOB NUMBER: 18110022 SCALE: 1" = 200' DRAWN BY: JWA CHECKED BY: DEL APPROVED BY: DEL FIELD REPRESENTATIVE: JWA	<b>McCRONE</b> ENGINEERS • SURVEYORS • PLANNERS ANNAPOLIS • CENTREVILLE • BELTSVILLE • BETHESDA • BOWERSVILLE • DEERFIELD	<b>REVISIONS</b> <table border="1"> <thead> <tr> <th>REV #</th> <th>DATE</th> <th>DESCRIPTION</th> </tr> </thead> <tbody> <tr> <td> </td> <td> </td> <td> </td> </tr> </tbody> </table>	REV #	DATE	DESCRIPTION				
	REV #	DATE	DESCRIPTION								
PROJECT NO.: 18110022 PROJECT NAME: TOWN OF PERRYVILLE CORPORATE LIMITS PROJECT LOCATION: SEVENTH ELECTION DISTRICT, CECIL COUNTY, MARYLAND PROJECT STATUS: CONCEPT	DATE: 5/1/2018 TIME: 10:00 AM DRAWN BY: JWA CHECKED BY: DEL APPROVED BY: DEL FIELD REPRESENTATIVE: JWA	PROJECT NO.: 18110022 PROJECT NAME: TOWN OF PERRYVILLE CORPORATE LIMITS PROJECT LOCATION: SEVENTH ELECTION DISTRICT, CECIL COUNTY, MARYLAND PROJECT STATUS: CONCEPT	PROJECT NO.: 18110022 PROJECT NAME: TOWN OF PERRYVILLE CORPORATE LIMITS PROJECT LOCATION: SEVENTH ELECTION DISTRICT, CECIL COUNTY, MARYLAND PROJECT STATUS: CONCEPT	PROJECT NO.: 18110022 PROJECT NAME: TOWN OF PERRYVILLE CORPORATE LIMITS PROJECT LOCATION: SEVENTH ELECTION DISTRICT, CECIL COUNTY, MARYLAND PROJECT STATUS: CONCEPT	PROJECT NO.: 18110022 PROJECT NAME: TOWN OF PERRYVILLE CORPORATE LIMITS PROJECT LOCATION: SEVENTH ELECTION DISTRICT, CECIL COUNTY, MARYLAND PROJECT STATUS: CONCEPT						



**ANNEXATION PLAN**  
 PARCELS #7 & 401  
**TOWN OF PERRYVILLE**  
 SEVENTH ELECTION DISTRICT, CECL COUNTY MARYLAND

DATE: MAY 2014  
 JOB NUMBER: 07060022  
 SCALE: AS SHOWN  
 DRAWN BY: MGC  
 CHECKED BY: MGC  
 APPROVED BY: MGC

**McCRONE**  
 ENGINEERS • SURVEYORS • PLANNERS  
 ANNEAPOLIS • FORT MYERS • ELLICOTT CITY • BALTIMORE • OLEANDER

ALL CHANGES MUST BE SET IN BY THE CLIENT AND APPROVED BY THE TOWN OF PERRYVILLE.

REV. #	DATE	DESCRIPTION

